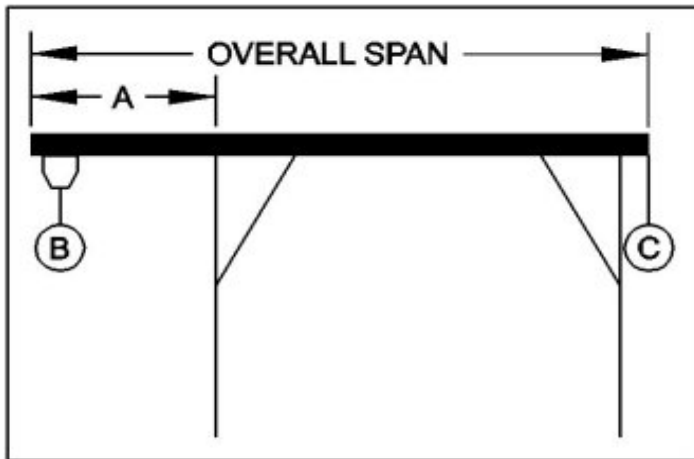




## WALLACE CRANES PORTABLE CRANE CANTILEVER CHART

GANTRY MODEL NUMBER: S4T12-A15AC  
 I-BEAM: A12" X 11.0#/' X 15'  
 I-BEAM LENGTH (OVERALL SPAN): 180 Inches  
 MAXIMUM CANTILEVER DISTANCE (A): 45 Inches  
 GANTRY RATED CAPACITY: 4000 Lbs.  
 MAXIMUM CANTILEVERED LOAD (B): 2400 Lbs.  
 GANTRY WEIGHT: 604 Lbs.  
 I-BEAM WEIGHT: 165 Lbs.



**PROPER CANTILEVER PROCEDURES**  
 Required counterweight should not be supported by gantry caster frame.

Load and trolley should be able to freely traverse the I-beam through the main legs and brace legs of the gantry.

### REQUIRED COUNTERWEIGHT AT [C]

A	B	B	B	B	B	B	B	B
IN	300	600	900	1200	1500	1800	2100	2400
FEET	LBS.	LBS.	LBS.	LBS.	LBS.	LBS.	LBS.	LBS.
1	0	0	0	0	0	0	3	46
2	0	0	0	79	172	264	356	449
3	0	18	168	318	468	618	768	918
3.75	0	125	325	525	725	925	1125	1325