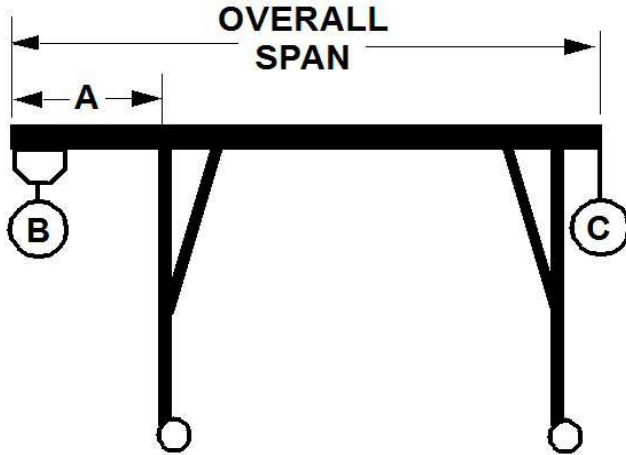


# WALLACE CRANES

## PORTABLE CRANE CANTILEVER CHART

GANTRY MODEL NUMBER:	S4T10-S15AC
I-BEAM:	S10" X 25.4#/' X 15'
I-BEAM LENGTH (OVERALL SPAN):	180 Inches
MAXIMUM CANTILEVER DISTANCE (A):	45 Inches
GANTRY RATED CAPACITY:	4000 Lbs.
MAXIMUM CANTILEVERED LOAD (B):	2400 Lbs.
GANTRY WEIGHT:	735 Lbs.
I-BEAM WEIGHT:	381 Lbs.



**PROPER CANTILEVER PROCEDURES**  
 Required counterweight should not be supported by gantry caster frame.

Load and trolley should be able to freely traverse the I-beam through the main legs and brace legs of the gantry.

		REQUIRED COUNTERWEIGHT AT [C]						
A	B	B	B	B	B	B	B	B
IN	300	600	900	1200	1500	1800	2100	2400
FEET	LBS.	LBS.	LBS.	LBS.	LBS.	LBS.	LBS.	LBS.
1	0	0	0	0	0	0	0	0
2	0	0	0	31	123	215	307	400
3	0	0	130	280	430	580	730	880
3.75	0	96	296	496	696	896	1096	1296

71 BACTON HILL RD \* FRAZER, PA \* 19355-1005  
 (outside PA) 1-800-553-5438 \* (inside PA) 610-647-1400 \* Fax: 610-644-9043

71 BACTON HILL RD \* FRAZER, PA 19355-1005  
 (Outside PA) 1-800-553-5438 \* (Inside PA) 610-647-1400 \* Fax: 610-644-9043  
[www.wallacecranes.com](http://www.wallacecranes.com)