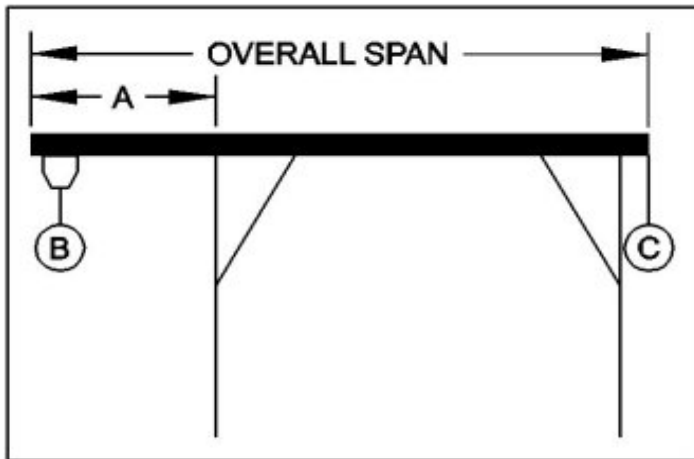




## WALLACE CRANES PORTABLE CRANE CANTILEVER CHART

GANTRY MODEL NUMBER: FHS616-S25AC  
 I-BEAM: S18" X 54.7#/' X 25'  
 I-BEAM LENGTH (OVERALL SPAN): 300 Inches  
 MAXIMUM CANTILEVER DISTANCE (A): 75 Inches  
 GANTRY RATED CAPACITY: 6000 Lbs.  
 MAXIMUM CANTILEVERED LOAD (B): 3600 Lbs.  
 GANTRY WEIGHT: 2170 Lbs.  
 I-BEAM WEIGHT: 1367 Lbs.



**PROPER CANTILEVER PROCEDURES**  
 Required counterweight should not be supported by gantry caster frame.

Load and trolley should be able to freely traverse the I-beam through the main legs and brace legs of the gantry.

REQUIRED COUNTERWEIGHT AT [C]

A IN FEET	B 400 LBS.	B 800 LBS.	B 1200 LBS.	B 1600 LBS.	B 2000 LBS.	B 2400 LBS.	B 2800 LBS.	B 3200 LBS.	B 3600 LBS.
1	0	0	0	0	0	0	0	0	0
2	0	0	0	0	0	0	0	0	0
3	0	0	0	0	0	0	0	0	0
4	0	0	0	0	0	0	111	264	416
5	0	0	0	0	85	285	485	685	885
6	0	0	0	141	394	646	899	1151	1404
6.25	0	0	0	209	476	742	1009	1276	1542