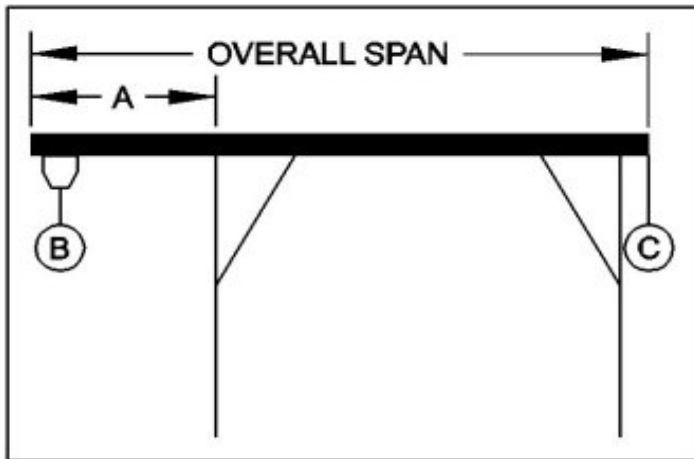




WALLACE CRANES PORTABLE CRANE CANTILEVER CHART

GANTRY MODEL NUMBER: FHS616-S20AC
 I-BEAM: S12" X 31.8#/' X 20'
 I-BEAM LENGTH (OVERALL SPAN): 240 Inches
 MAXIMUM CANTILEVER DISTANCE (A): 60 Inches
 GANTRY RATED CAPACITY: 6000 Lbs.
 MAXIMUM CANTILEVERED LOAD (B): 3600 Lbs.
 GANTRY WEIGHT: 1439 Lbs.
 I-BEAM WEIGHT: 636 Lbs.



PROPER CANTILEVER PROCEDURES
 Required counterweight should not be supported by gantry caster frame.

Load and trolley should be able to freely traverse the I-beam through the main legs and brace legs of the gantry.

REQUIRED COUNTERWEIGHT AT [C]

A IN FEET	B 400 LBS.	B 800 LBS.	B 1200 LBS.	B 1600 LBS.	B 2000 LBS.	B 2400 LBS.	B 2800 LBS.	B 3200 LBS.	B 3600 LBS.
1	0	0	0	0	0	0	0	0	0
2	0	0	0	0	0	0	0	26	115
3	0	0	0	0	42	183	324	466	607
4	0	0	0	159	360	560	760	960	1160
5	0	0	186	453	719	986	1253	1519	1786