



## WALLACE CRANES PORTABLE CRANE CANTILEVER CHART

GANTRY MODEL NUMBER: FHS613-M30AC

I-BEAM: S18" X 54.7#/' X 30' REINF 8" X 10'

I-BEAM LENGTH (OVERALL SPAN): 360 Inches

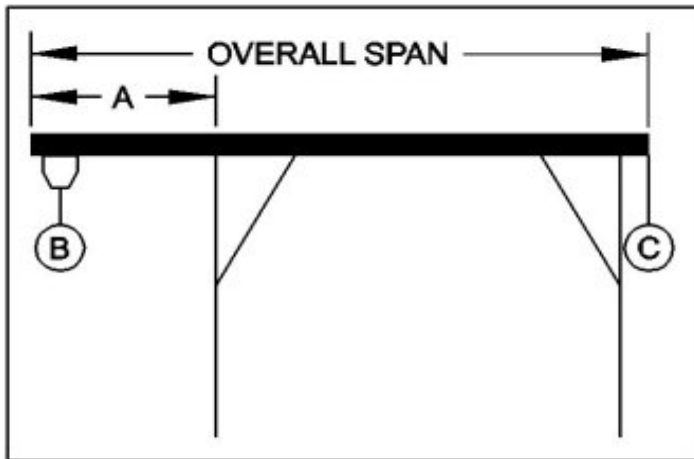
MAXIMUM CANTILEVER DISTANCE (A): 90 Inches

GANTRY RATED CAPACITY: 6000 Lbs.

MAXIMUM CANTILEVERED LOAD (B): 3600 Lbs.

GANTRY WEIGHT: 2528 Lbs.

I-BEAM WEIGHT: 1825 Lbs.



PROPER CANTILEVER PROCEDURES  
Required counterweight should not be supported by gantry caster frame.

Load and trolley should be able to freely traverse the I-beam through the main legs and brace legs of the gantry.

### REQUIRED COUNTERWEIGHT AT [C]

A IN FEET	B 400 LBS.	B 800 LBS.	B 1200 LBS.	B 1600 LBS.	B 2000 LBS.	B 2400 LBS.	B 2800 LBS.	B 3200 LBS.	B 3600 LBS.
1	0	0	0	0	0	0	0	0	0
2	0	0	0	0	0	0	0	0	0
3	0	0	0	0	0	0	0	0	0
4	0	0	0	0	0	0	0	0	0
5	0	0	0	0	0	0	38	198	358
6	0	0	0	0	0	164	364	564	764
7	0	0	0	0	231	474	718	961	1205
7.5	0	0	0	106	373	640	906	1173	1440