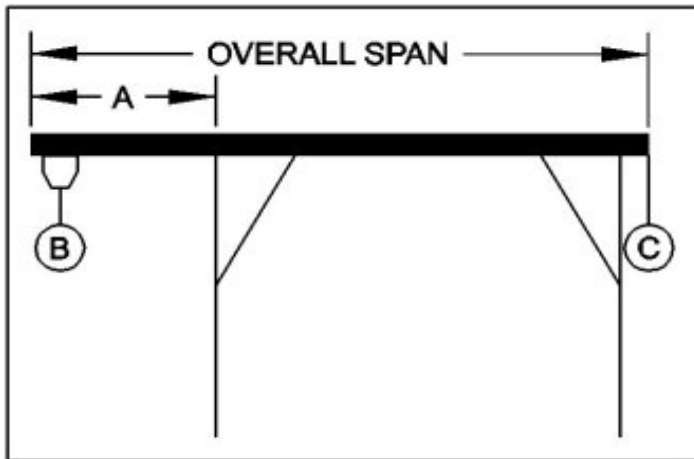




## WALLACE CRANES PORTABLE CRANE CANTILEVER CHART

GANTRY MODEL NUMBER: FHS413-S35AC  
 I-BEAM: S18" X 54.7#/' X 35'  
 I-BEAM LENGTH (OVERALL SPAN): 420 Inches  
 MAXIMUM CANTILEVER DISTANCE (A): 105 Inches  
 GANTRY RATED CAPACITY: 4000 Lbs.  
 MAXIMUM CANTILEVERED LOAD (B): 2400 Lbs.  
 GANTRY WEIGHT: 2613 Lbs.  
 I-BEAM WEIGHT: 1920 Lbs.



**PROPER CANTILEVER PROCEDURES**  
 Required counterweight should not be supported by gantry caster frame.

Load and trolley should be able to freely traverse the I-beam through the main legs and brace legs of the gantry.

REQUIRED COUNTERWEIGHT AT [C]

A IN FEET	B 300 LBS.	B 600 LBS.	B 900 LBS.	B 1200 LBS.	B 1500 LBS.	B 1800 LBS.	B 2100 LBS.	B 2400 LBS.
1	0	0	0	0	0	0	0	0
2	0	0	0	0	0	0	0	0
3	0	0	0	0	0	0	0	0
4	0	0	0	0	0	0	0	0
5	0	0	0	0	0	0	0	0
6	0	0	0	0	0	0	0	0
7	0	0	0	0	0	0	0	133
8	0	0	0	0	0	44	222	400
8.75	0	0	0	0	13	213	413	613