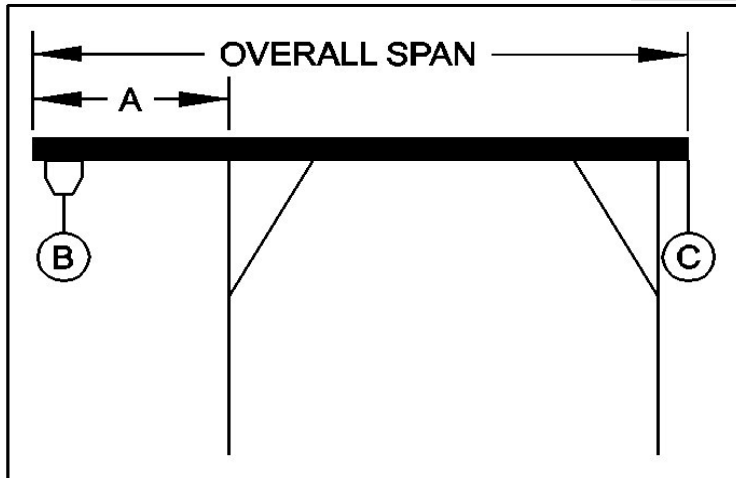




PORTABLE CRANE CANTILEVER CHART

GANTRY MODEL NUMBER: A3T15D-A12
 I-BEAM: Alu. 10" X 8.8#/' X 12'
 I-BEAM LENGTH (OVERALL SPAN): 144 Inches
 MAXIMUM CANTILEVER DISTANCE (A): 36 Inches
 GANTRY RATED CAPACITY: 3000 Lbs.
 MAXIMUM CANTILEVERED LOAD (B): 1800 Lbs.
 GANTRY WEIGHT: 592 Lbs.
 I-BEAM WEIGHT: 106 Lbs.



PROPER CANTILEVER PROCEDURES
 Required counterweight should not be supported by gantry caster frame.

Load and trolley should be able to freely traverse the I-beam through the main legs and brace legs of the gantry.

REQUIRED COUNTERWEIGHT AT [C]

A	B	B	B	B	B	B
IN	300	600	900	1200	1500	1800
FEET	LBS.	LBS.	LBS.	LBS.	LBS.	LBS.
1	0	0	0	0	0	36
2	0	0	74	194	314	434
3	0	121	321	521	721	921