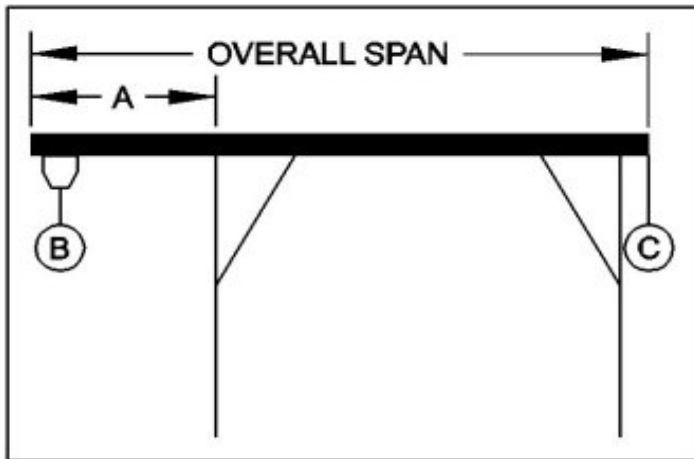




## WALLACE CRANES PORTABLE CRANE CANTILEVER CHART

GANTRY MODEL NUMBER: 8T24-S35  
 I-BEAM: S24" X 79.9#/' X 35'R  
 I-BEAM LENGTH (OVERALL SPAN): 420 Inches  
 MAXIMUM CANTILEVER DISTANCE (A): 105 Inches  
 GANTRY RATED CAPACITY: 16,000 Lbs.  
 MAXIMUM CANTILEVERED LOAD (B): 9600 Lbs.  
 GANTRY WEIGHT: 5769 Lbs.  
 I-BEAM WEIGHT: 3245 Lbs.



**PROPER CANTILEVER PROCEDURES**  
 Required counterweight should not be supported by gantry caster frame.

Load and trolley should be able to freely traverse the I-beam through the main legs and brace legs of the gantry.

REQUIRED COUNTERWEIGHT AT [C]

A IN FEET	B 1200 LBS.	B 2400 LBS.	B 3600 LBS.	B 4800 LBS.	B 6000 LBS.	B 7200 LBS.	B 8400 LBS.	B 9600 LBS.
1	0	0	0	0	0	0	0	0
2	0	0	0	0	0	0	0	0
3	0	0	0	0	0	0	0	0
4	0	0	0	0	0	0	0	0
5	0	0	0	0	0	0	185	585
6	0	0	0	0	0	430	927	1423
7	0	0	0	0	521	1121	1721	2321
8	0	0	0	440	1151	1862	2574	3285
8.75	0	0	56	856	1656	2456	3256	4056