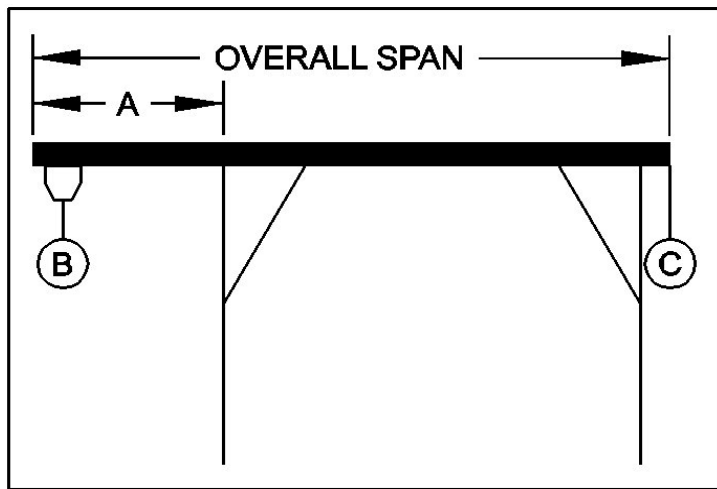




## PORTABLE CRANE CANTILEVER CHART

GANTRY MODEL NUMBER:	5T15-A15AC
I-BEAM:	A12"X11.0#/'X15'REINF.8"X6.4#/'X5'
I-BEAM LENGTH (OVERALL SPAN):	180 Inches
MAXIMUM CANTILEVER DISTANCE (A):	45 Inches
GANTRY RATED CAPACITY:	10,000 Lbs.
MAXIMUM CANTILEVERED LOAD (B):	6000 Lbs.
GANTRY WEIGHT:	1350 Lbs.
I-BEAM WEIGHT:	198 Lbs.



**PROPER CANTILEVER PROCEDURES**  
 Required counterweight should not be supported by gantry caster frame.

Load and trolley should be able to freely traverse the I-beam through the main legs and brace legs of the gantry.

A	B	B	B	B	B	B	B	B
IN	750	1500	2250	3000	3750	4500	5250	6000
FEET	LBS.	LBS.	LBS.	LBS.	LBS.	LBS.	LBS.	LBS.
1	0	0	0	0	0	0	82	189
2	0	0	32	263	494	724	955	1186
3	0	99	474	849	1224	1599	1974	2349
3.75	0	358	858	1358	1858	2358	2858	3358