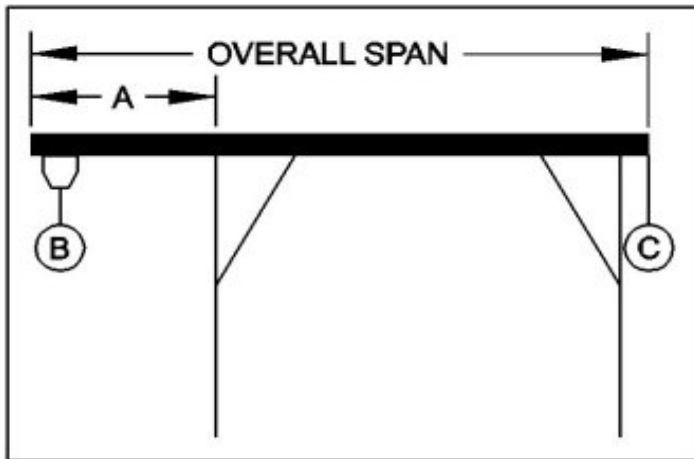




## WALLACE CRANES PORTABLE CRANE CANTILEVER CHART

GANTRY MODEL NUMBER: 5T15-15AC  
 I-BEAM: S12" X 31.8#' X 15'  
 I-BEAM LENGTH (OVERALL SPAN): 180 Inches  
 MAXIMUM CANTILEVER DISTANCE (A): 45 Inches  
 GANTRY RATED CAPACITY: 10,000 Lbs.  
 MAXIMUM CANTILEVERED LOAD (B): 6000 Lbs.  
 GANTRY WEIGHT: 1624.5 Lbs.  
 I-BEAM WEIGHT: 477 Lbs.



**PROPER CANTILEVER PROCEDURES**  
 Required counterweight should not be supported by gantry caster frame.

Load and trolley should be able to freely traverse the I-beam through the main legs and brace legs of the gantry.

REQUIRED COUNTERWEIGHT AT [C]

A	B	B	B	B	B	B	B	B
IN	750	1500	2250	3000	3750	4500	5250	6000
FEET	LBS.	LBS.	LBS.	LBS.	LBS.	LBS.	LBS.	LBS.
1	0	0	0	0	0	0	0	61
2	0	0	0	147	378	609	839	1070
3	0	0	372	747	1122	1497	1872	2247
3.75	0	267	767	1267	1767	2267	2767	3267