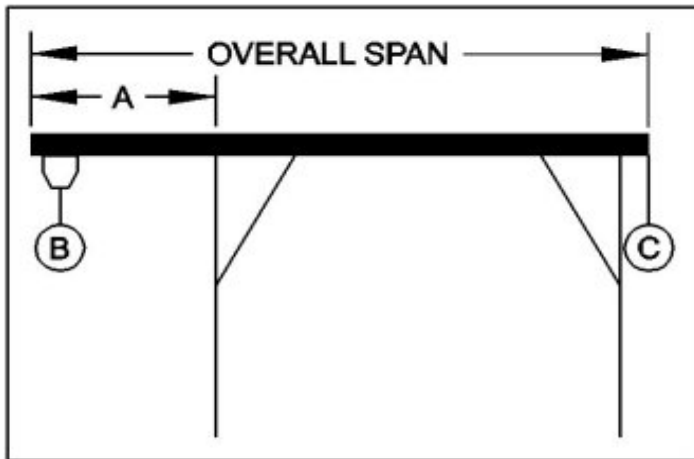




## WALLACE CRANES PORTABLE CRANE CANTILEVER CHART

GANTRY MODEL NUMBER: 10T19-S30  
 I-BEAM: S24" X 79.9#/' X 30'R  
 I-BEAM LENGTH (OVERALL SPAN): 360 Inches  
 MAXIMUM CANTILEVER DISTANCE (A): 90 Inches  
 GANTRY RATED CAPACITY: 20,000 Lbs.  
 MAXIMUM CANTILEVERED LOAD (B): 12000 Lbs.  
 GANTRY WEIGHT: 4865 Lbs.  
 I-BEAM WEIGHT: 2781 Lbs.



**PROPER CANTILEVER PROCEDURES**  
 Required counterweight should not be supported by gantry caster frame.

Load and trolley should be able to freely traverse the I-beam through the main legs and brace legs of the gantry.

REQUIRED COUNTERWEIGHT AT [C]

A	B	B	B	B	B	B	B	B
IN	1500	3000	4500	6000	7500	9000	10500	12000
FEET	LBS.	LBS.	LBS.	LBS.	LBS.	LBS.	LBS.	LBS.
1	0	0	0	0	0	0	0	0
2	0	0	0	0	0	0	0	0
3	0	0	0	0	0	0	55	388
4	0	0	0	0	89	550	1012	1473
5	0	0	0	245	845	1445	2045	2645
6	0	0	165	915	1665	2415	3165	3915
7	0	0	729	1642	2555	3468	4382	5295
7.5	0	31	1031	2031	3031	4031	5031	6031