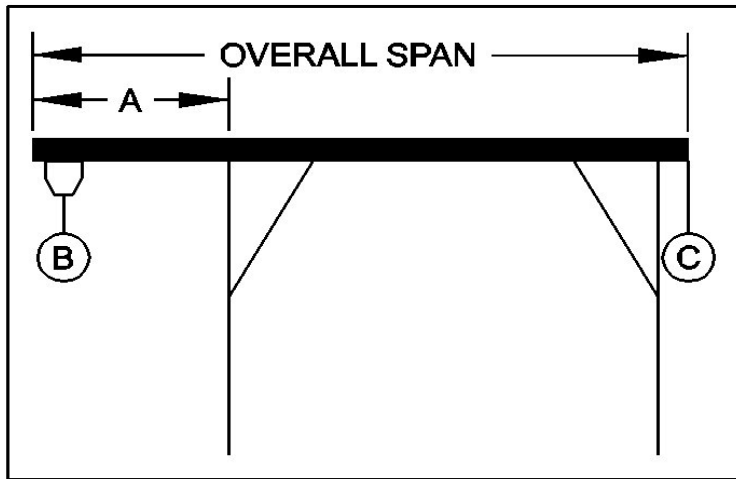




PORTABLE CRANE CANTILEVER CHART

GANTRY MODEL NUMBER: A3T12-A15
 I-BEAM: Alu. 12" X 11#/' X 15'
 I-BEAM LENGTH (OVERALL SPAN): 180 Inches
 MAXIMUM CANTILEVER DISTANCE (A): 45 Inches
 GANTRY RATED CAPACITY: 3000 Lbs.
 MAXIMUM CANTILEVERED LOAD (B): 1800 Lbs.
 GANTRY WEIGHT: 487 Lbs.
 I-BEAM WEIGHT: 167 Lbs.



PROPER CANTILEVER PROCEDURES
 Required counterweight should not be supported by gantry caster frame.

Load and trolley should be able to freely traverse the I-beam through the main legs and brace legs of the gantry.

REQUIRED COUNTERWEIGHT AT [C]

A	B	B	B	B	B	B
IN	300	600	900	1200	1500	1800
FEET	LBS.	LBS.	LBS.	LBS.	LBS.	LBS.
1	0	0	0	0	0	19
2	0	0	46	138	230	323
3	0	77	227	377	527	677
3.75	0	184	384	584	784	984