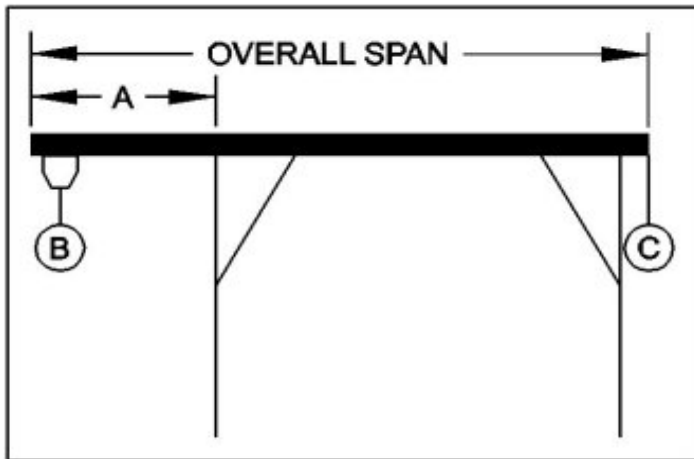




WALLACE CRANES PORTABLE CRANE CANTILEVER CHART

GANTRY MODEL NUMBER: A0T12-A10AC
 I-BEAM: A6"X4.30#/'X10'
 I-BEAM LENGTH (OVERALL SPAN): 120 Inches
 MAXIMUM CANTILEVER DISTANCE (A): 30 Inches
 GANTRY RATED CAPACITY: 1000 Lbs.
 MAXIMUM CANTILEVERED LOAD (B): 600 Lbs.
 GANTRY WEIGHT: 274 Lbs.
 I-BEAM WEIGHT: 44 Lbs.



PROPER CANTILEVER PROCEDURES
 Required counterweight should not be supported by gantry caster frame.

Load and trolley should be able to freely traverse the I-beam through the main legs and brace legs of the gantry.

REQUIRED COUNTERWEIGHT AT [C]

| A | B | B | B | B | B | B |
|------|------|------|------|------|------|------|
| IN | 100 | 200 | 300 | 400 | 500 | 600 |
| FEET | LBS. | LBS. | LBS. | LBS. | LBS. | LBS. |
| 1 | 0 | 0 | 0 | 0 | 0 | 0 |
| 2 | 0 | 0 | 18 | 68 | 118 | 168 |
| 2.5 | 0 | 3 | 70 | 137 | 203 | 270 |