



Wallace Cranes 15T Assembly

Portable Crane Instructions

Read, Understand, and Comply with all instructions supplied with this crane. Also, pay attention to the equipment used with this crane such as hoists, trolleys, power drives (if applicable), etc. Read, Understand, and Comply with the requirements of OSHA (Occupational Safety, and Health Administration) 1910.179

Before You Begin

- Clear an open area at least as large as 2 X the frame length and wider than the beam.
- Get a crane or lifting device capable of lifting the entire weight of the completed crane.
- Assemble a work crew of no less than three. One will operate the lifting crane and the others perform the assembly. You may need more to lift and position the high capacity legs.
- **GENERAL NOTES:** It is advised to leave all fasteners on bolts untightened until the unit is completely assembled. This will allow the joints to seat to ensure proper component alignment. When the unit has been fully assembled, the bolts can be tightened to the recommended 25 ft. lbs.

Step 1. ATTACHING THE I-BEAM FITTINGS TO I-BEAM

- a. For assembly select a two point lifting device for stability (overhead crane, boom crane) of adequate capacity to handle the model being assembled.
- b. Place I-Beam on suitable supports so stencilling is right side up.
- c. Slide brace leg brackets (item 7) on the beam first, then main leg brackets (item 11).
- d. Remove spreader bar (item 5) from caster frame carton and attach to main leg bracket and brace leg brackets as shown using set screws and nuts provided.

NOTE: The 3/8-16 NC x 3/4" long set screws (item 4) are installed in all brackets and are used to lock the brackets to the I-Beam. After final bracket location, the 3/4" long set screws are locked in place with the long set screws used to install the spreader bar and 3/4" long set screws in the outer brackets.

- e. After attaching main leg and brace leg, position assembly on I-Beam for desired span and tighten set screws in all brackets and the nuts holding spreader bar in place.
- f. Install trolley stops (item 12) on beam as shown.
- g. Repeat at other end except omit trolley stops until after the trolley has been installed. (Step 2).

Step 2. INSTALLING TROLLEY

- a. Install trolley on end of beam without the trolley stops and then install the trolley stops.
- b. Suitable means, such as heavy duty clamps, should be used to keep trolley in center of beam while raising (or lowering) the assembly.



Step 3. ATTACHING MAIN LEGS AND BRACE LEGS TO I-BEAM

- a. Place main leg (item 16) between main leg brackets (item 11) and install pin (item 1) and pin retainer (item 8). The leg must be oriented so that brace leg "boot" is inboard as shown.
- b. Place brace leg (item 24) in "boot" on main leg (item 16) and pin in place with pin (item 17) and retainers (item 2) as shown. Brace leg must be oriented so that pin hole in upper end of leg is parallel with I-Beam.
- c. The brace leg can now be installed between the brace leg brackets (item 7). Install pin (item 6) and pin retainer (item 8).
- d. Install remaining main legs and brace legs in the same manner.
- e. Insert splice tubes (item 20) into upper main legs and install retaining bolts (item 30), nuts and washers (items 21 & 22).
- f. Assemble lower leg (item 19) over splice tube and install retaining bolts as in (e) above.

NOTE: Do NOT tighten the bolts in sub-steps (e) and (f) above. You will need some play to insert the Caster Frame Pins in Step 4. as described next.

Step 4. CASTER FRAME ASSEMBLY

- a. Assemble caster (item 26) to caster plate (item 29) with bolts (item 27), nuts and washers provided (items 21 & 22).
- b. Assemble above assemblies to caster frame (item 25) using bolt (item 30), nut and lock washer (items 21 & 22).

Step 5. ASSEMBLY OF MAIN LEGS TO CASTER FRAME

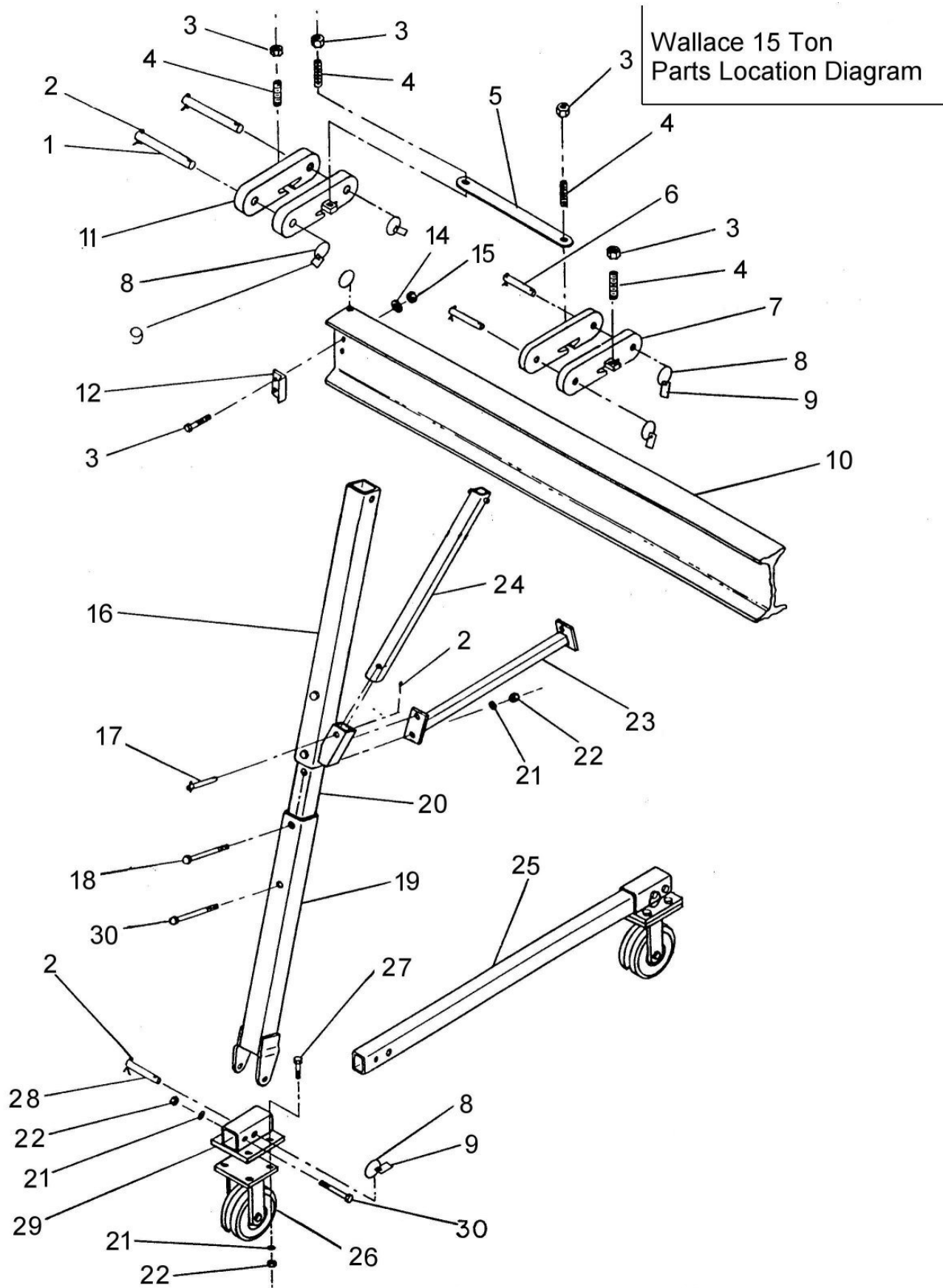
- a. Raise the I-Beam until the distance between the main legs is approximately the same as the length of the caster frame.
- b. Attach main legs (item 19) to caster frames using pin (item 28). Secure pins with locking device supplied (item 8).
- c. Recheck to make certain all locking devices (nuts, cotter pins, locking rings, etc.) are in place and secured.

Step 6. CROSS BRACE ASSEMBLY

- a. Cross-brace (item 23) is placed between the main legs as shown using bolts (item 18) nuts and washers (items 21 & 22).

NOTE: Bolts for the Main Leg splices (item 30) were loosely installed in Steps (3-e) and (3-f). In the above step, the interior bolts on the splice (item 18) are also used to attach the Cross Brace.





© Copyright Wallace Cranes 2008. All rights reserved.

